



Txk Polyclonal Antibody

Catalog No	YP-Ab-15025
Isotype	IgG
Reactivity	Human;Rat;Mouse;
Applications	IHC;IF;ELISA
Gene Name	TXK
Protein Name	Tyrosine-protein kinase TXK
Immunogen	Synthesized peptide derived from the Internal region of human Txk.
Specificity	Txk Polyclonal Antibody detects endogenous levels of Txk protein.
Formulation	Liquid in PBS containing 50% glycerol, 0.5% BSA and 0.02% sodium azide.
Source	Polyclonal, Rabbit,IgG
Purification	The antibody was affinity-purified from rabbit antiserum by affinity-chromatography using epitope-specific immunogen.
Dilution	IHC: 1/100 - 1/300. ELISA: 1/40000.. IF 1:50-200
Concentration	1 mg/ml
Purity	≥90%
Storage Stability	-20°C/1 year
Synonyms	TXK; PTK4; RLK; Tyrosine-protein kinase TXK; Protein-tyrosine kinase 4; Resting lymphocyte kinase
Observed Band	
Cell Pathway	Cytoplasm . Nucleus . Cell membrane ; Peripheral membrane protein . Localizes in the vicinity of cell surface receptors in the plasma membrane after receptor stimulation. Translocates into the nucleus and enhances IFN-gamma gene transcription in T-cells.
Tissue Specificity	Expressed in T-cells and some myeloid cell lines. Expressed in Th1/Th0 cells with IFN-gamma-producing potential.
Function	catalytic activity:ATP + a [protein]-L-tyrosine = ADP + a [protein]-L-tyrosine phosphate.,similarity:Belongs to the protein kinase superfamily. Tyr protein kinase family. TEC subfamily.,similarity:Contains 1 protein kinase domain.,similarity:Contains 1 SH2 domain.,similarity:Contains 1 SH3 domain.,tissue specificity:Expressed in T-cells and some myeloid cell lines.,
Background	catalytic activity:ATP + a [protein]-L-tyrosine = ADP + a [protein]-L-tyrosine phosphate.,similarity:Belongs to the protein kinase superfamily. Tyr protein kinase family. TEC subfamily.,similarity:Contains 1 protein kinase domain.,similarity:Contains 1 SH2 domain.,similarity:Contains 1 SH3 domain.,tissue specificity:Expressed in T-cells and some myeloid cell lines.,

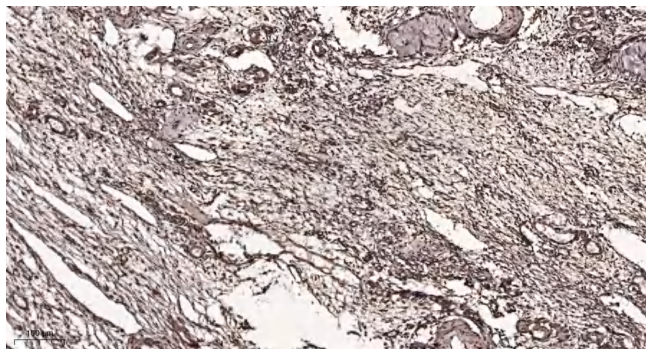
**matters needing attention**

Avoid repeated freezing and thawing!

Usage suggestions

This product can be used in immunological reaction related experiments. For more information, please consult technical personnel.

Products Images



Immunohistochemical analysis of paraffin-embedded human oophoroma. 1, Antibody was diluted at 1:200(4° overnight). 2, Tris-EDTA,pH9.0 was used for antigen retrieval. 3,Secondary antibody was diluted at 1:200(room temperature, 45min).